



for SpaceClaim

YaPdm is a PDM-system developed in Sweden by Maxiom PLM AB in corporation with SC Scandinavia AB, local reseller of SpaceClaim. Maxiom PLM AB is Europe's first SpaceClaim Authorized Solution Provider.

SpaceClaim is a modern CAD-system working with "direct modeling". An easy-to-use 3D-system prepared for the future. That's why we, at Maxiom PLM, choose SpaceClaim as our first integrated design-system. There are many benefits with SpaceClaim, for example;

- Can read most existing CAD-formats
- Fast 3D-prototyping
- Less need for several design-systems
- Pricing is lower than traditional CAD
- Faster time-to-simulation from your design
- Modern and user friendly
- Easy tools for repairing models
- Short training

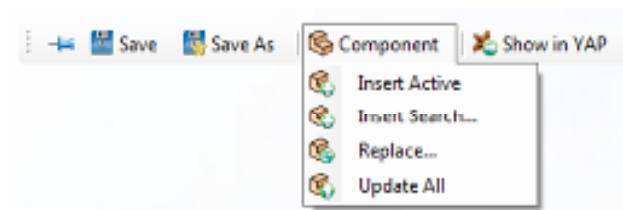
YaPdm with SpaceClaim-integration

The integration allows you to manage revisions and structures from SpaceClaim with the rest of the information at your company by functionality like;

- Save – Save files and components into YaPdm
- Insert component – Search for components in YaPdm and insert into SpaceClaim
- Replace component – Replace components in SpaceClaim with stored ones in YaPdm
- Replace revision – Replace revision of your component in SpaceClaim
- Manage internal and external references
- Update properties bidirectional between PDM and SpaceClaim for drawing sheets and models
- User friendly and fast customization

To the right;

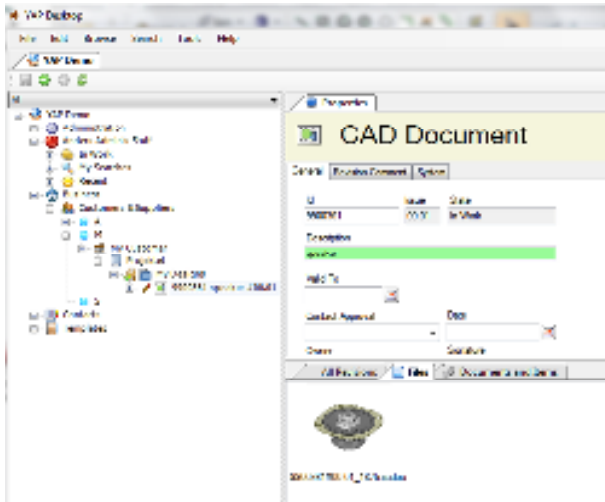
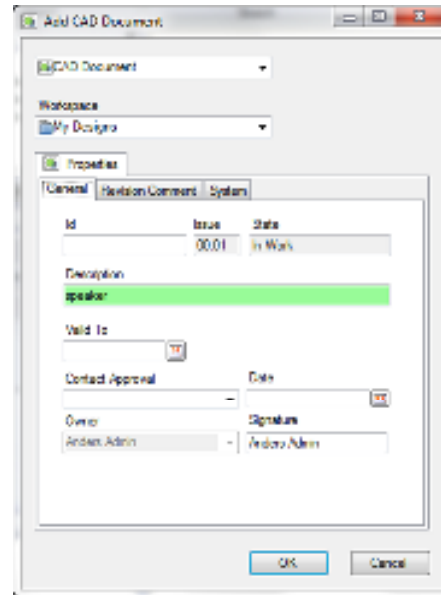
The YaPdm-menu in SpaceClaim allows you search and save functionality into YaPdm. The menu is recognizable in other applications as well, such as Excel or Outlook for example.



Set up what properties you wish to synchronize between the PDM-system and SpaceClaim in the YaPdm application. For example descriptions, approval information etc. Since the sheet is located in the same file as the 3D-model the metadata for this sheet is simply updated in the same way.

To the right;

An example of a model saved from SpaceClaim into YaPdm. All data possible is extracted from the CAD-file. Additional information from the model/drawing can then be complemented. To decide where to place the files there are "WorkSpaces". Such areas can easily be maintained in the user interface. In the case our workspace is a folder named "My Design"...



To the left;

Structure sample in PDM. Customer related to a project with a folder structure containing a SpaceClaim design. Items, documents or any object can be linked as designed. The data-model can be altered to match your company's processes on the fly...

Versions

YaPdm supports all SpaceClaim releases; 2009, 2009 PLUS and 2010.

MS Office-integrations

Same deep interaction as we have with SpaceClaim, updating files and metadata, is also built in for Microsoft Office.

Complete integrations are available for Word, Excel and Outlook. There is also a PowerPoint integration. Even here all tested versions are supported, from Office 2000 to 2010...

Products from Maxiom PLM

The product family from Maxiom PLM contains the following;

- YaPdm Desktop
- YaPdm for SpaceClaim
- YaPdm for ANSYS
- YaPdm Web



Maxiom PLM
Första Långgatan 18
413 28 Göteborg
+46 31 243950
yapdm@maxiom.se
www.yapdm.se

